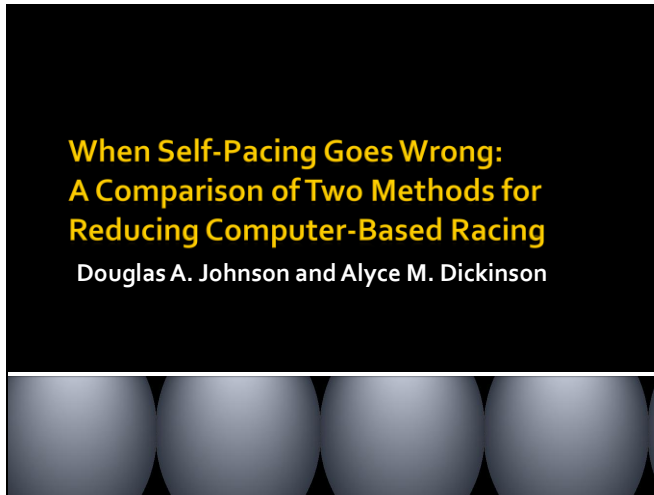


Slide 1



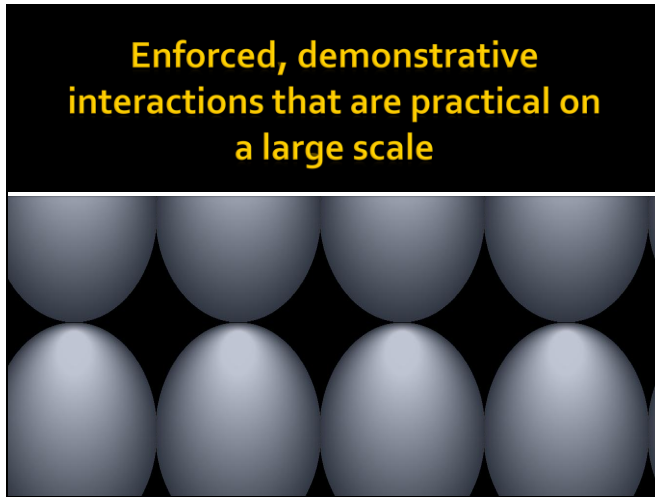
Slide 2



Slide 3



Slide 4



Slide 5



Slide 6



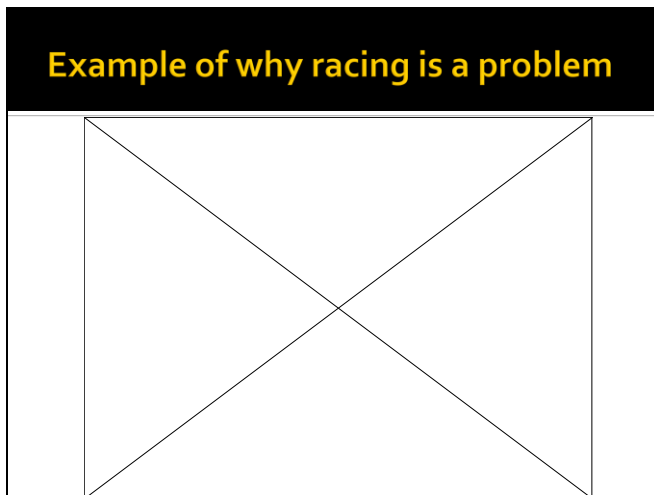
Slide 7



Slide 8



Slide 9



When Self-Pacing Goes Wrong: A Comparison of Two Methods for Reducing Computer-Based Racing

DOUGLAS A. JOHNSON and Alyce M. Dickinson

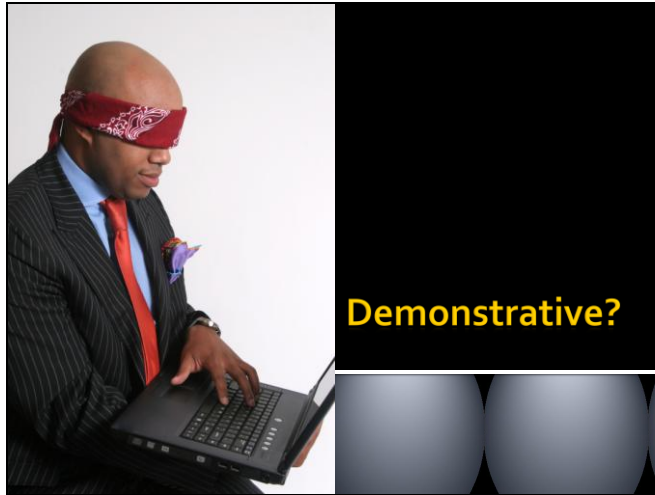
Western Michigan University

May 26th, 2009

Association for Behavior Analysis International 35th Annual Convention, Phoenix, AZ

Correspondence: djohnson@operant-tech.com

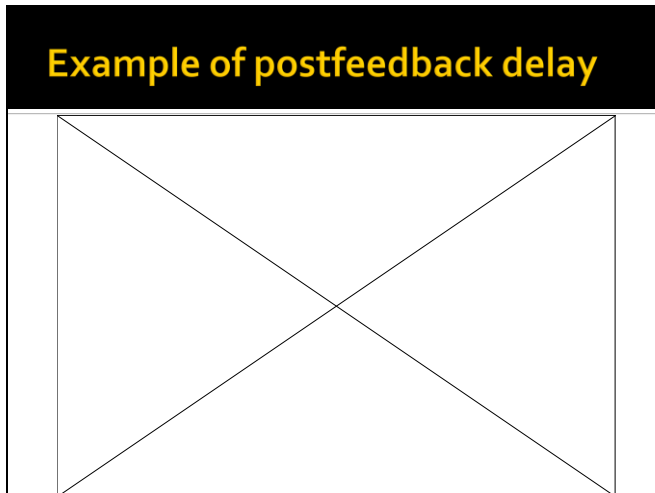
Slide 10



Slide 11



Slide 12



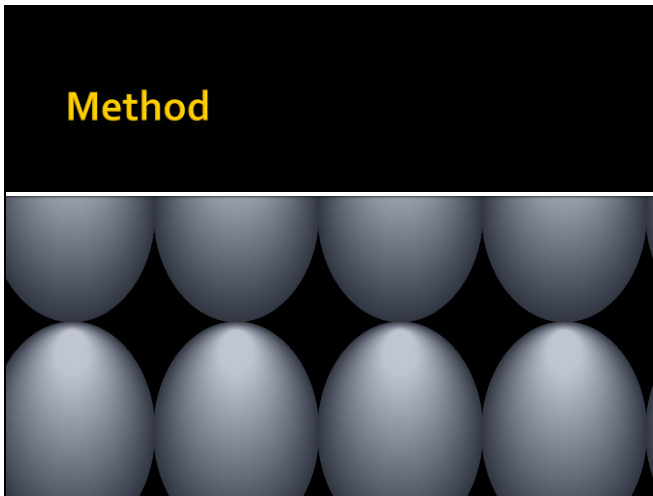
Slide 13



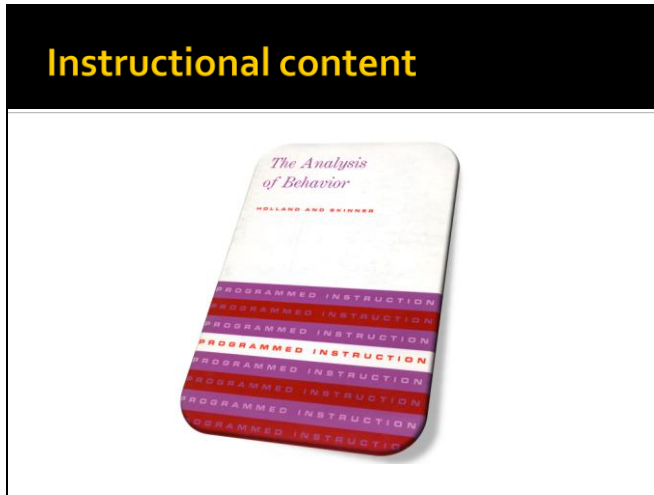
Slide 14



Slide 15



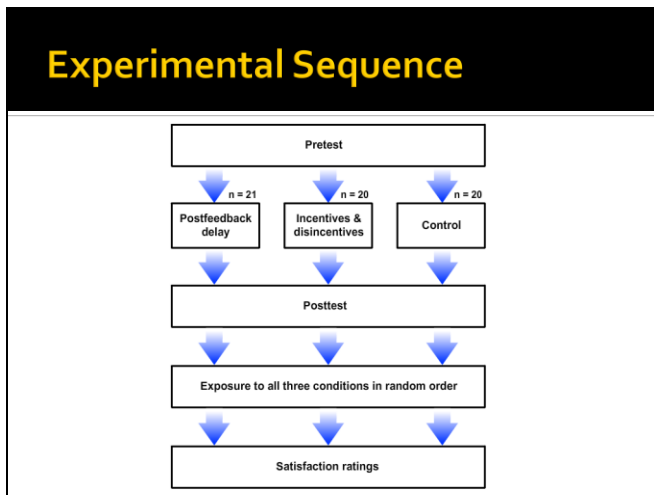
Slide 16



Slide 17



Slide 18



Slide 19

Required to supply answer

Unit 3 29 questions total

Q 3: In (D), "neutral stimulus" means a tone which *** effect on salivation before conditioning.

Type your answer(s) in the space(s) below.

Submit Your Answer

Slide 20

Immediate feedback

Unit 21 71 questions total

Q 1: Phase 1. The pigeon is on a(n) (1) *** (IT) schedule with an average interval of 1 minute. A response maintained on this schedule will be extinguished rather (2) _____ when reinforcement is discontinued.

Your answers	Correct answer(s)
(1) variable interval	variable-interval
(2) quickly	slowly

Was your answer correct? Score with c or i Submit scoring

Slide 21

Self-scoring

Unit 22 37 questions total

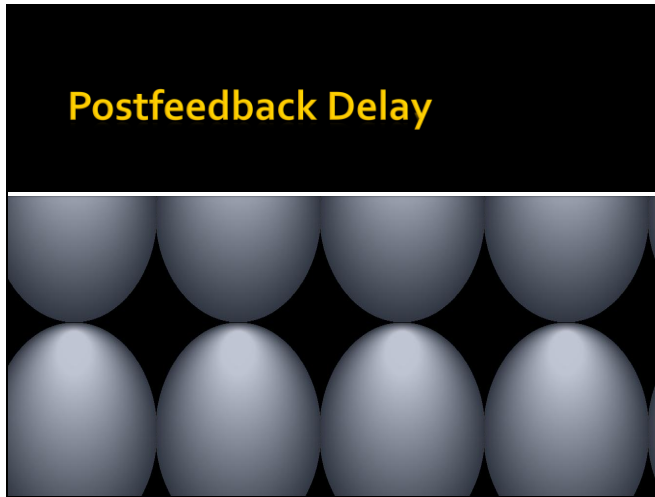
Q 3: Bending down to the food magazine makes the food visible. The *sight* of food (a conditioned reinforcer) _____ bending down to the magazine.

Your answers	Correct answer(s)
precedes	reinforces

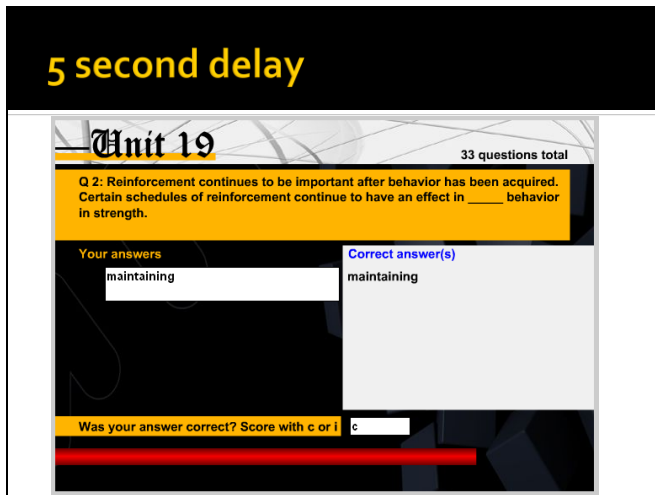
Was your answer correct? Score with c or i

Proceed to next question

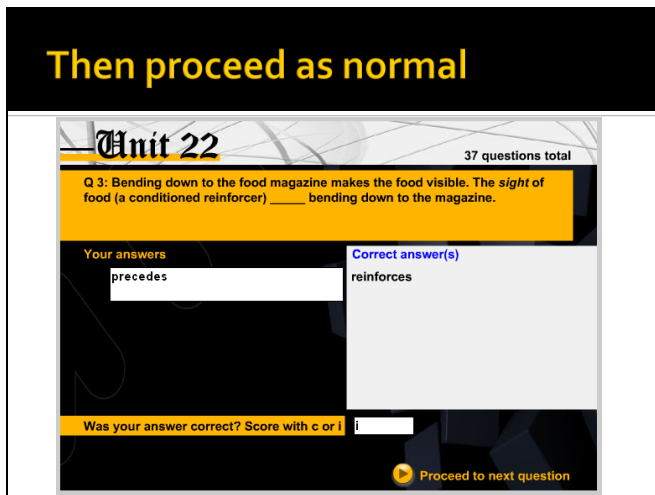
Slide 22



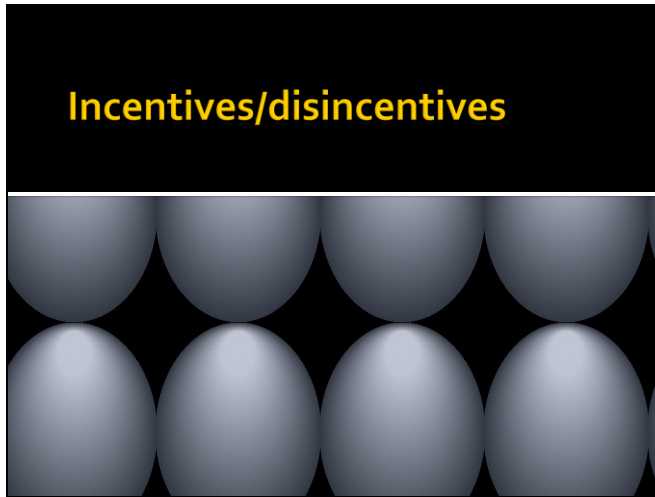
Slide 23



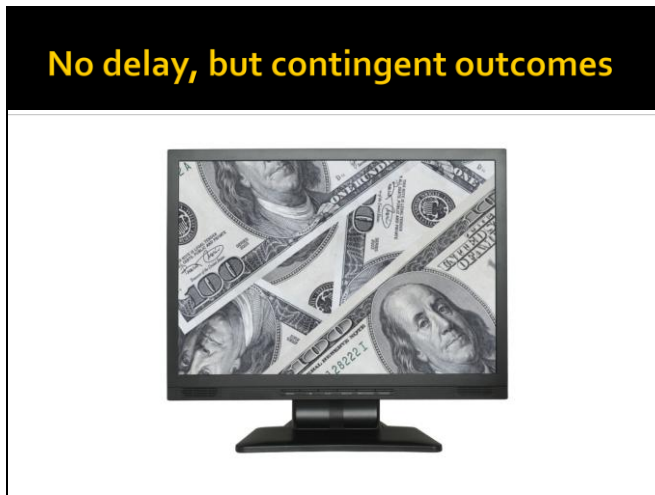
Slide 24



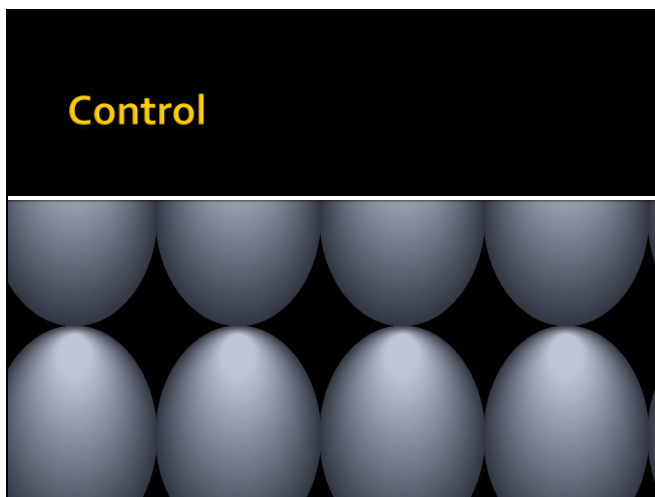
Slide 25



Slide 26



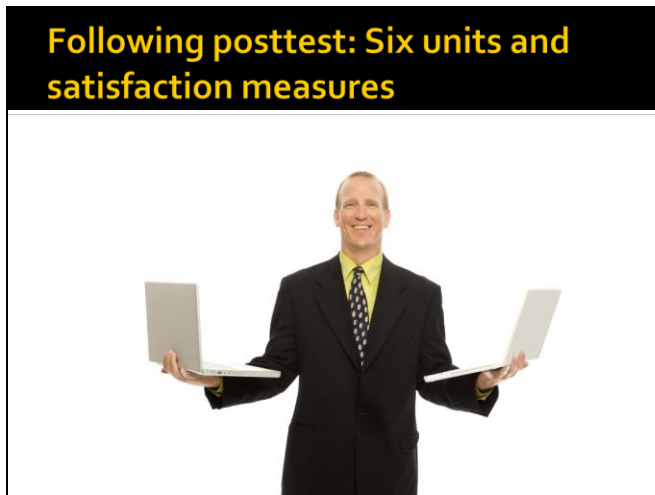
Slide 27



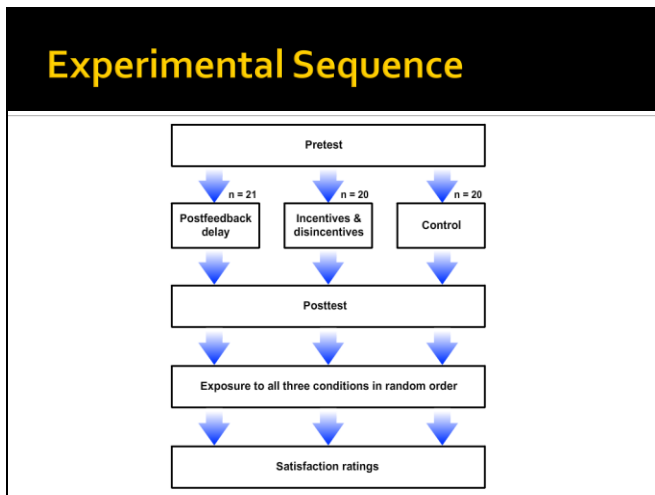
Slide 28



Slide 29




Slide 30



Slide 31


Results



- No self-pacing differences
- Time excluding 5 second delays
 - Postfeedback delay: 7 hours, 14 minutes
 - Incentives/disincentives: 7 hours, 7 minutes
 - Control: 7 hours, 5 minutes
 - $p = 0.956$

Slide 32


Results



- Adjusted means for percentage correct on the posttest
 - Postfeedback delay: 49.2%
 - Incentives/disincentives: 32.6%
 - Control: 34.5%
 - $p = 0.005$
 - Source of differences: Postfeedback delay and other two conditions

Slide 33

Results



- Satisfaction impacted as well
- 1 = Not at all satisfied
- 9 = Extremely satisfied
 - Postfeedback delay: 5.4
 - Incentives/disincentives: 5.1
 - Control: 8.3
 - $p = 0.000$
 - Source of differences: Control and other two conditions

Slide 34

Results



- Satisfaction impacted as well
- 1 = Not at all satisfied
- 9 = Extremely satisfied
- Postfeedback delay: 5.4 (**\$5.29**)
- Incentives/disincentives: 5.1 (**\$1.88**)
- Control: 8.3 (**\$6.33**)
- $p = 0.000$
- Source of differences: Control and other two conditions

Slide 35

Discussion: Postfeedback delay



Slide 36

Discussion: Incentives/disincentives



Slide 37

Discussion: Future directions



- Comparisons of differing postfeedback delay durations
- Conditions under which monetary incentives would work
- Combinations of postfeedback delays and monetary incentives
- Mastery learning
- Branching

Slide 38

